



NICK LOATES

POWERED BY
exp UK

Kingshill Drive, Harrow, HA3

Guide Price £800,000

🛏 5 🚿 2 🚗 3

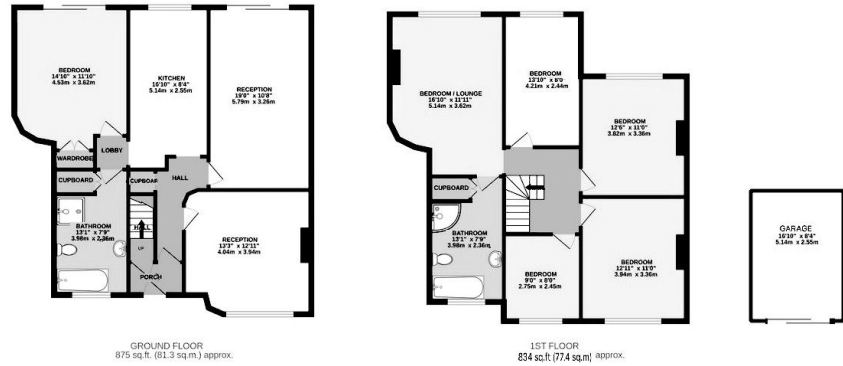


- Guide price £800,000
- Semi Detached
- Garage To The Rear
- Close To Outstanding Schools
- Investment Potential
- Five Bedrooms
- Huge Rear Garden
- Potential Throughout
- Over 1700 sqft Plus Garage



Ref NL0627 - Guide price £800,000 - £850,000

Call today to view this five bedroom semi detached house offering over 1700sq.ft of well proportioned accommodation arranged over two floors. The property is located within a short walk of Belmont Circle and is within 0.1 mile of Priestmead Primary School (Rated Outstanding by Ofsted). This house is in need of modernisation throughout but is situated on one of Kentons largest plots, towards the rear of the garden is a driveway for several cars and access to a detached garage. If you're looking for a substantial house with the imagination to become the family home, then call now to arrange a viewing.



When every effort has been made to ensure the accuracy of the location and floor measurements of doors, windows, rooms and any other parts are approximate and no responsibility is taken for any error, omission or misstatement. The price for illustrative purposes only and should be used as a guide by any prospective purchaser. The services, systems and appliances shown have not been tested and no guarantee is given to their operability or efficiency over the years.

